



LEAD-FREE / RoHS-COMPLIANT

MINIATURE SURFACE-MOUNT BIAS-TEE

BTL-0026SMG

Features

- Frequency Range: 500 kHz to 26 GHz
- Frequency Range with [External Coil](#): 5 kHz to 26 GHz
- 1 Watt RF Power Handling
- DC Current 500 mA
- Miniature Surface Mount Package
- Lead Free Assembly
- [Reflow Solderable](#)

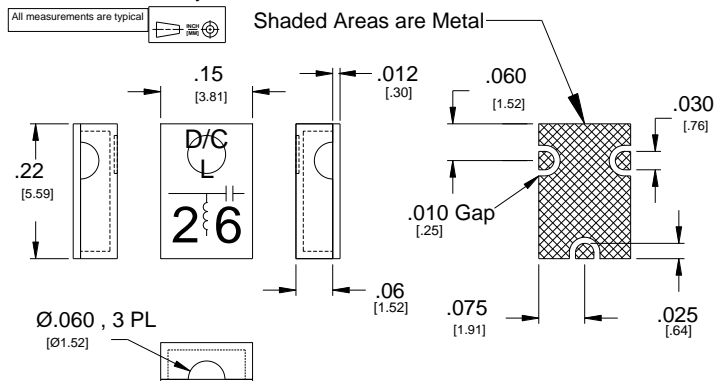


Electrical Specifications - Specifications guaranteed from -55 to +100°C, measured in a 50-Ohm system

Parameter	Frequency Range	Min	Typ	Max
Insertion Loss (dB)	500 kHz to 5 MHz		1	6
	5 MHz to 20 GHz		1	2
	20 GHz to 26 GHz		1.5	2.5
DC Current (mA)	500 kHz to 26 GHz			500
DC Resistance (Ohms)			<1.5	
Capacitance (uF)			1	
Inductance (uH)			17	
DC Port Isolation (dB)			35	
DC Voltage Maximum (V)				30
RF Power Maximum (W)				1

Model ¹	Description
BTL-0026SMG-1 BTL-0026SMG-2	500 kHz - 26 GHz Bias Tee, Surface Mount, LEAD-FREE/RoHS COMPLIANT

¹Default is -2 when not specified.
Connectorized test fixtures available. Consult factory.



Substrate material is 12-mil thick Rogers 4003, ½ Oz Electrodeposited Cu both sides.
ENIG, Gold 2-8 μ-inches, over solderable electroplated nickel, 100-200 μ-inches per QQ-N-290A
[Click here for suggested PCB layout.](#)

215 Vineyard Court, Morgan Hill, CA 95037 | Ph: 408.778.9952 | Fax 408.778.4300 | sales@markimicrowave.com

Typical Performance

Insertion Loss data was taken using TRL de-embedding procedures.

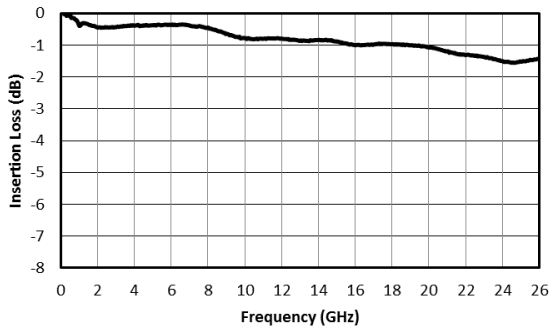


Fig. 1. Insertion loss.

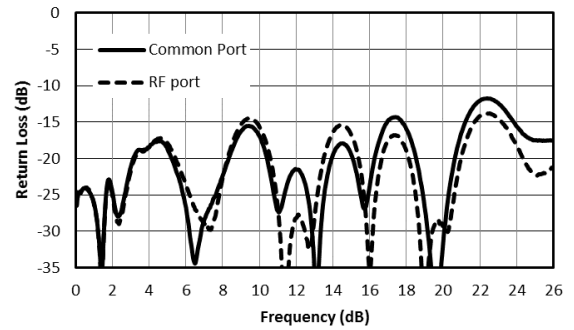


Fig. 2. Return loss

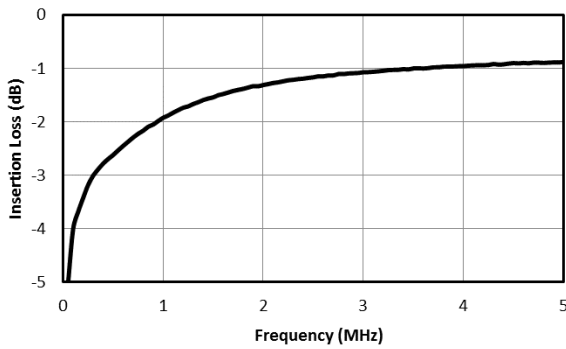


Fig. 3. Low Frequency Insertion Loss

Typical Performance vs Bias Current at Low frequencies

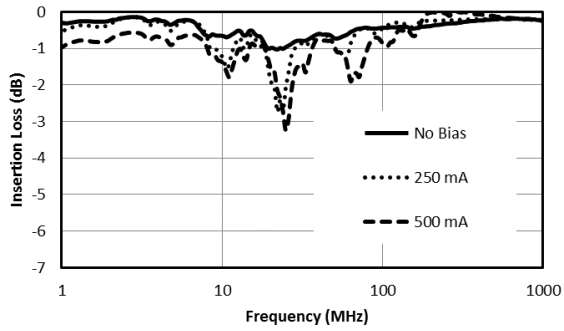


Fig. 4. Insertion loss vs Bias Current.

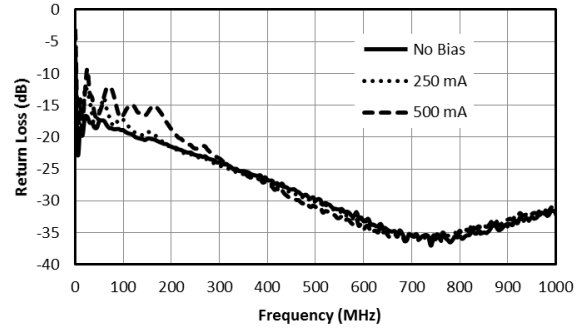


Fig. 5. Common Return Loss vs Bias Current

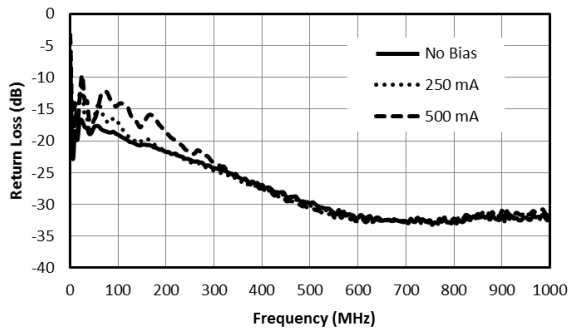


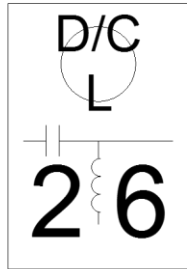
Fig. 6. RF Return Loss vs Bias Current

MINIATURE SURFACE MOUNT BIAS TEE

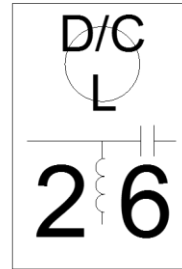
BTL-0026SMG

Page 4

Port Configuration Option



BTL-0026SMG-1



BTL-0026SMG-2

Revision History

Revision code	Revision Date	Comment
-	1/2021	Datasheet Initial Release

Marki Microwave reserves the right to make changes to the product(s) or information contained herein without notice. Marki Microwave makes no warranty, representation, or guarantee regarding the suitability of its products for any particular purpose, nor does Marki Microwave assume any liability whatsoever arising out of the use or application of any product.