

## HIGH POWER BIAS TEE

## BT2-0050

The BT2-0050 is constructed using a custom-made, resonance-free conical inductor to achieve extremely broadband performance. By minimizing the overall inductor size and using proprietary packaging techniques, the BT2-0050 is a superior option in terms of performance, reliability and ease-of-use when compared to cumbersome user-designed bias tees employing off-the-shelf conical inductors. The extremely low cutoff and resonance free operation makes the BT2-0050 suitable for biasing amplifiers, lasers, and modulators driven with high frequency data patterns.



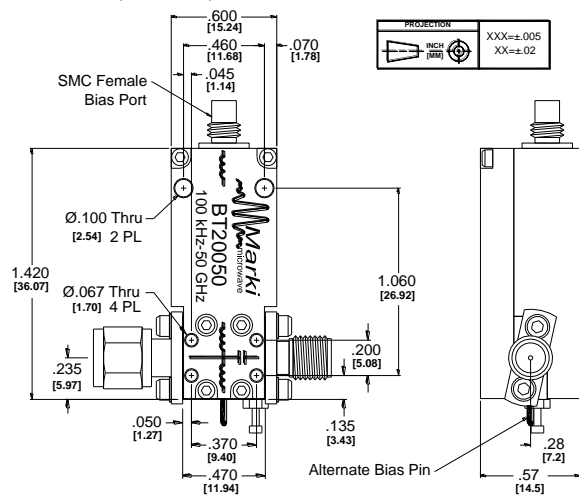
### Features

- Broadband: 100 kHz to 50 GHz
- Low Insertion Loss
- High Power
- Non-Resonant
- Compact Size

**Electrical Specifications** - Specifications guaranteed from -55 to +100°C, measured in a 50Ω system.

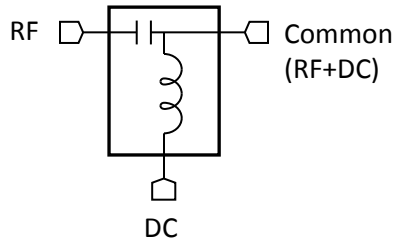
Parameter	Frequency Range	Min	Typ	Max
Insertion Loss (dB)	300 kHz-50 GHz		1.5	2.5
	100-300 kHz		2	
DC Port Isolation (dB)	100 kHz -1 GHz		50	
	1-50 GHz		30	
Return Loss (dB)	100 kHz-50 GHz		14	
RF Power (W)				5
DC Current (A)				2
DC Voltage (V)				50
DC Resistance (Ω)			0.5	
Risetime /Falltime (ps) <sup>1</sup>			10	

<sup>1</sup>Specified as 90%/10%. Calculated from  $\tau_{bt}^2 = (\tau_{out}^2 - \tau_{in}^2)$



215 Vineyard Court, Morgan Hill, CA 95037 | Ph: 408.778.4200 | Fax 408.778.4300 | info@markimicrowave.com

**Schematic**



**Application Examples**

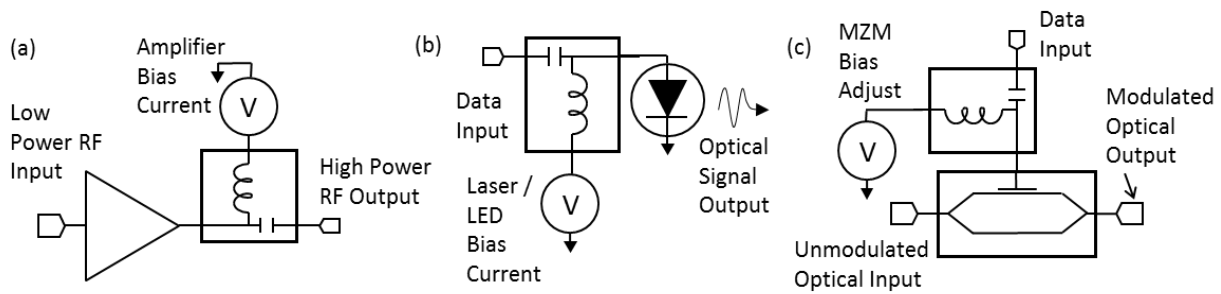


Fig. 1. Example Schematics of a) Broadband Microwave Amplifier Biasing, b) Laser/LED Biasing for Data Communication and c) Mach-Zender Modulator Biasing for Data Communication

**Typical Performance**

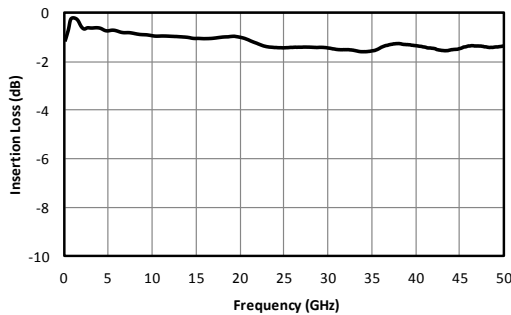


Fig. 2. RF insertion loss.

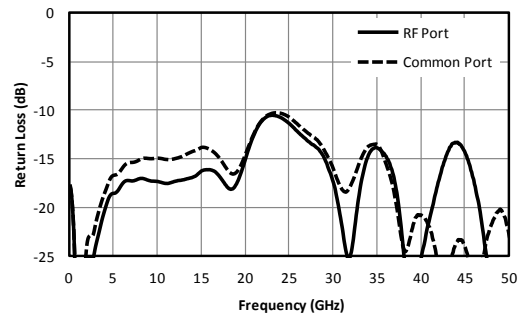


Fig. 3. Return loss.

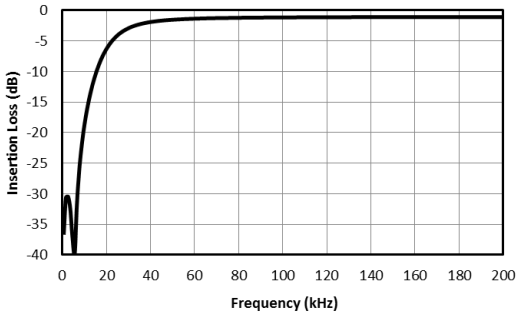


Fig. 4. Low frequency RF response.

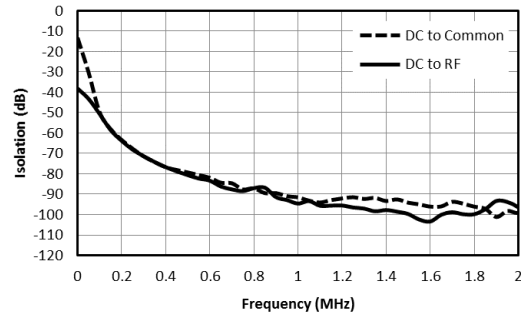


Fig. 5. Low frequency isolation.

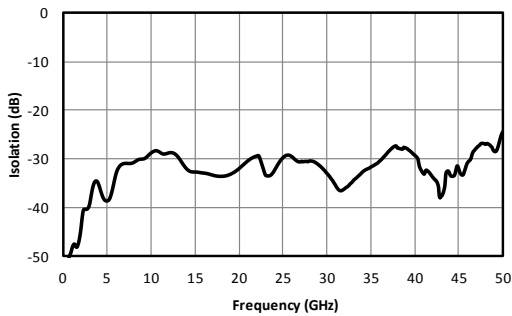


Fig. 6. DC-RF isolation.

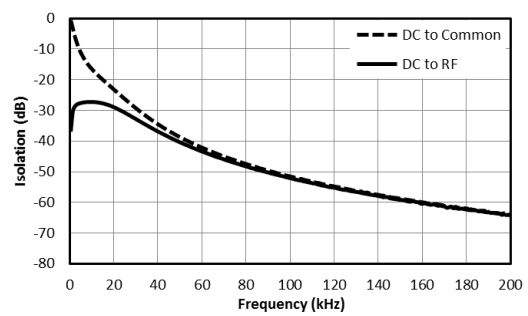


Fig. 7. Near DC isolation

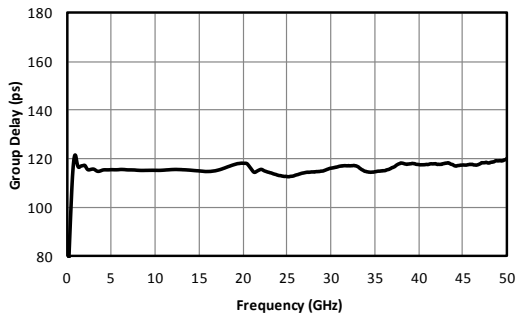


Fig. 8. Group delay.

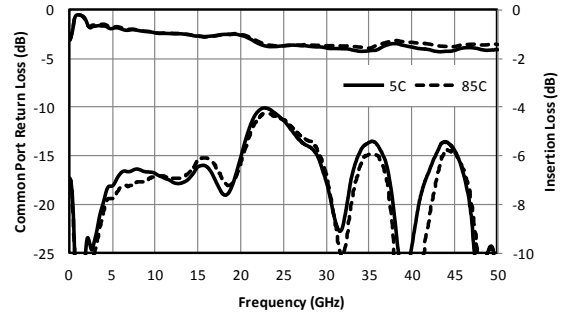


Fig. 9. Performance over temperature

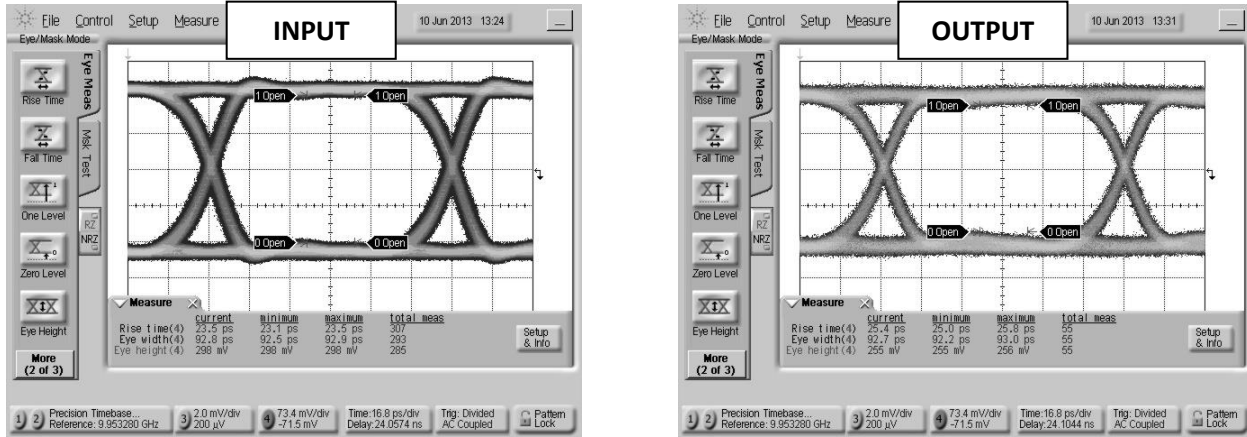


Fig. 7. Oscilloscope measurements of the BT2-0050 with a 10Gb/s PRBS pattern. Eye diagrams are taken with a  $2^{31}-1$  PRBS input demonstrating minimal eye distortion/closure afforded by the extremely low frequency operation of the bias tee.

Model Number	Description
BT2-0050	100 kHz to 50 GHz High Power Bias Tee with 2.4 mm connectors <sup>1</sup>

<sup>1</sup>Consult factory for other connector options.

Marki Microwave reserves the right to make changes to the product(s) or information contained herein without notice. Marki Microwave makes no warranty, representation or guarantee regarding the suitability of its products for any particular purpose, nor does Marki Microwave assume any liability whatsoever arising out of the use of or application of any product.

**Revision History**

Revision code	Revision Date	Comment
-	June 2013	Datasheet initial Release
A	February 2019	Corrected Low Frequency plots