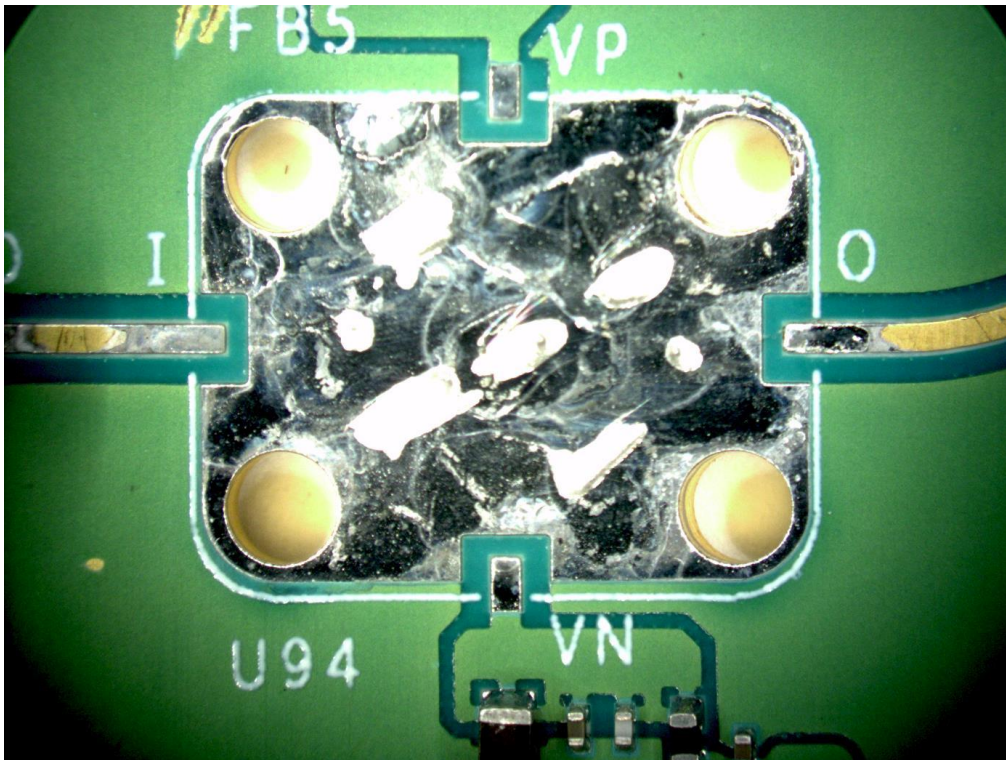


### Instructions for Hand Mounting Marki Microwave EZ/EQ Amplifiers and T3A Products

- 1) Prior to installation of the Marki components, populate all reflow-compatible surface mount components onto the PCB. When solder reflow and/or liquid cleaners procedures are used, ensure these steps are completed prior to hand installation of the Marki components since they are not compatible with these assembly processes.
- 2) Apply silver epoxy paste to the ground pad. Use a small amount of silver epoxy on the ground pad, in small "dots", as shown below. Avoid the application of large amounts of epoxy in order to prevent shorts between the ground and signal lines.



- 3) While holding the unit in place using tweezers or mounting screws, hand solder all signal I/O and bias pins. Do not apply the soldering iron to the I/O solder joint for longer than necessary to avoid damage to the component. A lower melting temperature eutectic solder such as Sn63/Pb37 is preferred, although lead-free solders can also be used.
- 4) Cure the silver epoxy according to the epoxy manufacturer's instructions.
- 5) If required, clean the assembly by wiping with isopropyl alcohol by hand.
- 6) (OPTIONAL) DC probe the I/O lines and verify the connections. Consult the Marki datasheets for DC circuit connections. If DC probe data is not available, contact the factory for proper readings.

If you have any questions please contact [support@markimicrowave.com](mailto:support@markimicrowave.com) or call 408-778-4200.