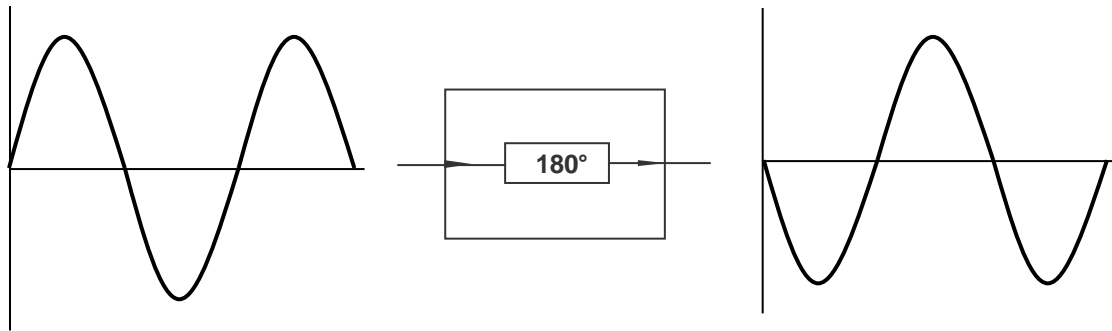


BROADBAND PULSE INVERTER (200 kHz to 40 GHz)

INV-0040

Page 2

Block Diagram



Typical Performance

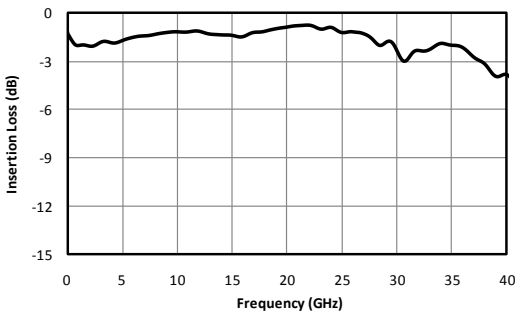


Fig. 1. Insertion loss.

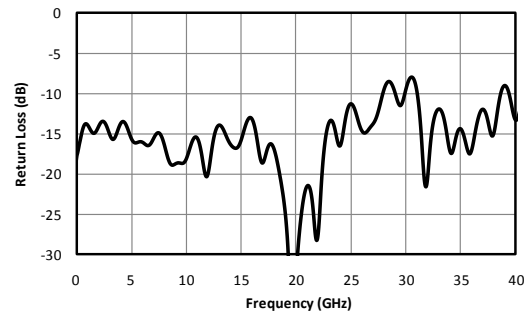


Fig. 2. Return loss.

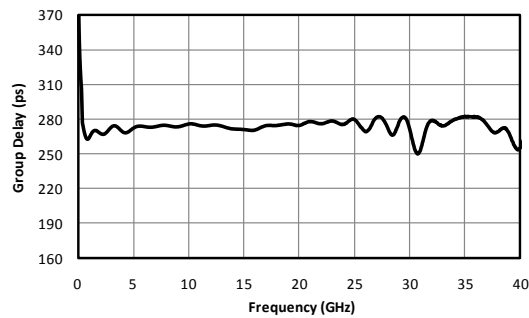


Fig. 3. Group Delay.

BROADBAND PULSE INVERTER (200 kHz to 40 GHz)

INV-0040

Page 3

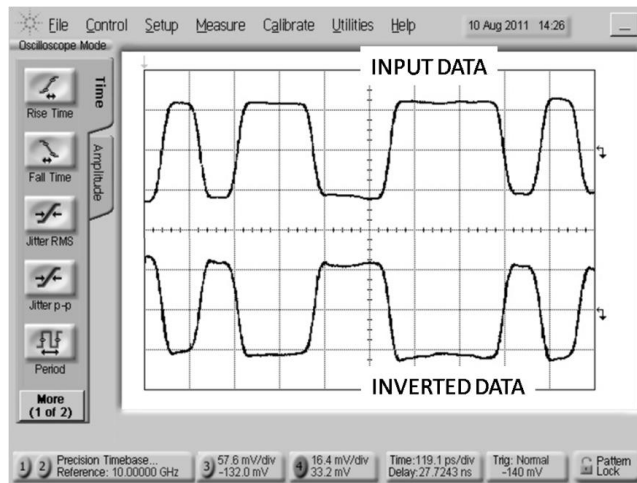


Fig. 4. Oscilloscope measurements of the INV-0040 with a 10 Gb/s PRBS pattern. Bit pattern is measured with a 2^7-1 PRBS input demonstrating extremely good pulse fidelity for the inverted output.

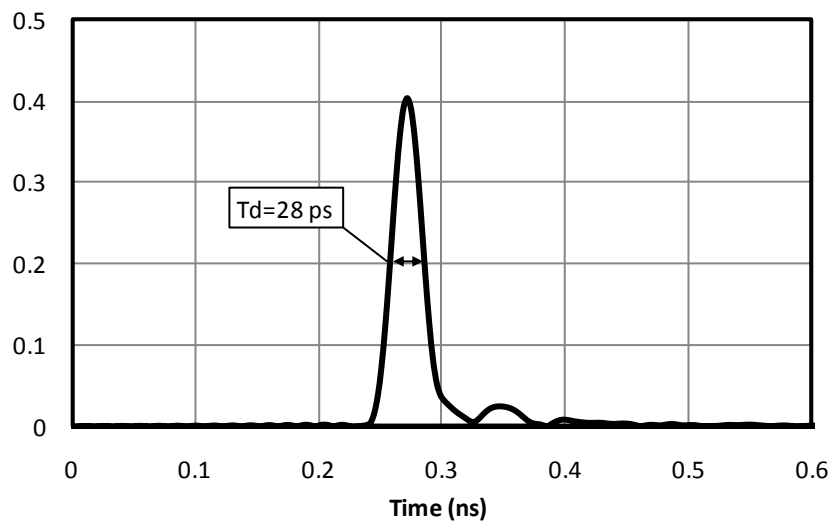


Fig. 5. Impulse response generated through TDR measurement in AWR Microwave Office® 2010, calculated using measured S-parameter data.

Marki Microwave reserves the right to make changes to the product(s) or information contained herein without notice. Marki Microwave makes no warranty, representation or guarantee regarding the suitability of its products for any particular purpose, nor does Marki Microwave assume any liability whatsoever arising out of the use of or application of any product.